

January 2020



RISEN SAVIOR

L U T H E R A N C H U R C H

23914 S. Alma School Road | Chandler, AZ 85248
Church Office 480.895.6782 | School Office 480.802.1505
www.rslcs.org | facebook.com/rslcs | @RSLCS

Rev. Ron Burcham
Senior Pastor
Ron.burcham@rslcs.org

Rev. Mark Hoffmann
Associate Pastor of
Congregational Care
Mark.hoffmann@rslcs.org

Joel Endicott
Director of Worship
Joel.endicott@rslcs.org

Susan Mello
Business Manager
Susan.mello@rslcs.org

Linda Pauley
Director of Early
Childhood Education
Linda.pauley@rslcs.org



- Building Update Page 4
- Saturday in the Park Page 6
- Memory and Faith Series Page 9
- HopeChest Page 11
- Financials Page 19-20

Merry Mayan Christmas

When my kids were younger I had a great plan to save money. I was going to tell them that we celebrate Christmas according to the Mayan calendar and Christmas is January 12. Why January 12 you ask? Because of the awesome after the holiday sales, of course! Sweaters that were \$65 on December 24 are now \$25. Toys are 20 – 30% off and even video games are on sale. That hard to get toy that was on back order, is now not only in stock, but on sale! Think of the money we could have saved. We probably could have paid for their college! Alas, my wife wouldn't go for it. She said something about doubting that the Mayans celebrated Christmas and we shouldn't lie to the children.

I do find it curious that one day an item is worth a certain amount and the next day it is only worth half as much. What happened in those 24 hours that passed? Certainly, fashions didn't change that quickly. Things like clothing don't have an expiration date on them. It not like a jacket will not keep you as warm if you buy it after Christmas.

I suppose this applies to much more than the holidays. After all the day that you turn 16 you are now able to attain a driver's license. You turn 18 and you can vote and at 21 you can purchase alcoholic beverages. Nothing dramatic happed at the stroke of midnight, yet your circumstances changed. The above changes, for the most part, are all positive. Unfortunately, there can be negative consequences when you reach certain milestones, many of them very unfair. When the company decides that at your age you no longer bring value and now your career is over. When the health insurance provider decides that you don't qualify to be an organ donor recipient. Maybe is it more subtle and now, in general, folks just don't value your opinion because they believe you are out of touch.

There is one who sees you as having extreme value and He never changes his opinion not matter what the calendar displays. In the Bible a man name Paul wrote these inspired words;

“For I am sure that neither death nor life, nor angels nor rulers, nor things present nor things to come, nor powers, nor height nor depth, nor anything else in all creation, will be able to separate us from the love of God in Christ Jesus our Lord.” (Romans 8:38 – 39)

Your value to God never changes and there is nothing in all of creation that can change His mind. You were worth Him sending His child to be born on Christmas, to die for you on Good Friday and to come out of the grave on Easter. He wants to be by your side now and for all time. You are invaluable to Him every day!

Pastor Ron Burcham

WORSHIP

Sunday Worship Services

7:30 & 11:30 am Traditional

8:50 & 10:10 am Contemporary

Communion is given at all 11:30 am services
and on the 1st, 3rd and 5th Sundays of the month.

*The Church Office
will close early on
New Year's Eve at 12:00 pm
and will be closed
New Year's Day.*

**JOIN US FOR
COFFEE AND DONUTS
BETWEEN SERVICES**

**ITS A GREAT WAY TO
CONNECT WITH OTHERS**

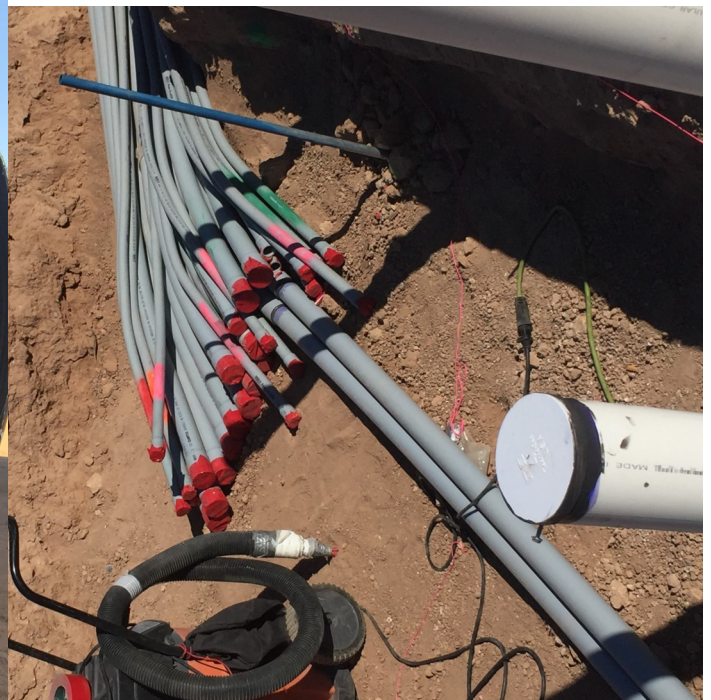
CONNECT

BUILDING UPDATE

We are making good progress on the North Property building. So far we are on schedule to be completed in the fall of 2020. As of writing this update the following has been completed or is near completion:

- Site work is completed with the leveling of the land.
- Huge underground water retention tanks have been buried. These allow us to use all of the land for the building and parking. The tanks that are still visible on the property will be buried south of the TPC, so we can expand parking around that building.
- All of the underground plumbing has been installed and inspected.
- Miles of underground conduit has been laid.
- The concrete slab has been laid for the Classrooms and Youth Center.
- The concrete slab for the Lobby and Worship Center is scheduled to be poured.
- Preparation for parking expansion around the TPC has begun.

By mid to late January the exterior walls of the building will start to go up!



CONNECT Continued...

Sanctity of Human Life Sunday

January 19 is this year's annual commemoration of the inherent worth of all human life as ordained by our God and Creator. Scripture tells us, "speak up for those who cannot speak for themselves, for the rights of all who are destitute." (Proverbs 31:8). Also, "rescue those being led away to death; hold back those staggering toward slaughter." (Proverbs 24:11). From the time of human conception in the womb to natural death in this life, our Lord intimately knows and loves us as His miraculous creation made in His own image. Our witness to the world about this truth is essential for the protection of life from death and persecution. For more information and insight go to Lutherans for Life at www.lutheransforlife.org and info@lutheransforlife.org.

Back to Church Event

This past November we hosted a Retiree/Adult Community "Back to Church" event. If you are not familiar with this type of event, it is an event that is done nationwide among churches to invite the unchurched back to the kingdom. Thanks to RS member Bryan Newman (who headed this event), it was a huge success, we had 55 people attend the luncheon and listen to Pastor Ron discuss why sometimes people stop attending church and the importance of finding a church home. We pray that all of the attendees find a church home or feel welcome to join us here at Risen Savior.



CONNECT Continued...

The Pathway Center Building Repair Update

The Pathway Center restoration is going well. The following is a partial list of the work completed:

- ⇒ Dry Wall installed and repaired
- ⇒ Drive-up window drawer removed and wall patched
- ⇒ All interior walls painted
- ⇒ New kitchen cabinets installed
- ⇒ New shelving unit in janitor's closet installed
- ⇒ South Conference Room lower cabinets rebuilt and existing doors re-installed.
- ⇒ Granite counter tops installed in the South Conference Room and kitchen.
- ⇒ All wood base board and caps installed.
- ⇒ All of the trim has been refreshed with stain.
- ⇒ Carpet replaced in the entire building.

Our insurance, Guide One, has been very easy to work with and all of the above work has been covered except our deductible of \$1,000. We hope to be back in the TPC by mid-Jan. or early Feb.

INVITING ALL FAMILIES

SATURDAY IN THE PARK



**SATURDAY JAN 18TH 4PM
TUMBLEWEED PARK
BRING A SIDE DISH**


RISEN SAVIOR
LUTHERAN CHURCH

Call or Text Emily Cady for more info – 480-225-7932

ANSWER



Prayer Warriors

Thursdays at 9:30 am in the Church Library.

If you have a passion for talking to the Lord in prayer or lifting up those who need physical, emotional or spiritual support, join us! Contact Joan at mandjscott@cox.net with any questions.

TO PLACE A PRAYER OR VISIT REQUEST:

- † Submit a prayer request by filling out a Prayer card found in the pews and place it in the offering plate or email prayers@rslcs.org. Prayers remain on the list for 4 weeks, unless an update is provided.
- † To have someone pray with you by phone or in person, email prayerwarriors@rslcs.org.
- † To notify the church of a surgery or hospitalization, please email visits@rslcs.org. Please include the facility and contact number.
- † After hours that need a timely response by a Pastor, please call 480.895.6782 Ext. 120 and leave your name and phone number.



Lutheran Women's Missionary League

This is an excellent opportunity to experience Christian fellowship with other women at Risen Savior Lutheran Church. All women are welcome!

- **General Meeting**
January 9 at 1:00 pm in The Perfect Place.
The Bible study will be "Beauty Marks" on page 20 in the Winter 2019 Quarterly. There will be a brief business meeting. Please plan to spend time in the Word with your sisters in Christ!
- **Save the Date—LWML Spring Luncheon**
March 28
Details coming soon...

Just B-R-E-A-T-H-E, Class For Everyone and Anyone

January 17 from 1:00 pm—2:30 pm in the Fellowship Hall.

Sit back for a moment and see the difference when you 'consciously' breathe...deep belly expansion breath in, slow long exhalation out and repeat. Goodness, is that what relaxation feels like? Join our class to learn more! RSVP to 480.223.8899 or joan@peacefullyhealing.com. Cost is \$5 per person.

Do You want to Connect ?

You can sign up to receive weekly e-blasts that includes our worship details, calendar along with church updates. Send your request email to jill.vermeire@rslcs.org.

ANSWER Continued...



Update

Samaritan's Purse would like to thank all of you for either packing a shoebox or making a donation to OCC this year. Risen Savior packed 487 shoeboxes that were then shipped to children. They were able to surpass their goal of sending 15,000 shoeboxes. You have helped to spread the message of Jesus to millions of children around the world. THANK YOU!!

Thanksgiving Turkey Drive Update

This year our congregation donated 90 frozen turkeys and provided the Chandler Food Bank with enough monetary donations for an additional 255 MORE turkeys...totaling 345 turkeys for Thanksgiving dinners! What a generous congregation we have!



Feeling Cold During Service on Sunday? Borrow a Shawl

Now Available at All of the Services.

Shawls are now available to borrow during your service if you are cold. See a Service Team Leader/Usher to use one and then return to a Service Team Leader/Usher after your service. Compliments of Care Ministry.



Landscape Ministry

This group meets Thursdays at 6:30 am for fellowship and to care for the church campus grounds. Contact Chuck for more information cmdeath1@gmail.com.



To listen to their weekly program: Visit their website at lhm.org; Scroll down on the webpage to "This week on TLH", then scroll further to "Listen Now" and enjoy daily devotions and the broadcast each week.

Active Duty Military Personnel

We would like to acknowledge and pray for all active duty military personnel associated with RSLCS. Please contact us on the prayer request line prayers@rslcs.org, a pew card or by phone with their names. Please include an address so we can send a card. Names are posted in the display case outside to the left of the Sanctuary. The Service flag is an official banner authorized by the Department of Defense for display by families who have members serving in the Armed Forces during any period of war or hostilities the United States may be engaged in for the duration of such hostilities.

ANSWER Continued...

RISEN SAVIOR CHURCH & THE PERFECT PLACE

PRESENT

MEMORY & FAITH® LECTURE SERIES



The Memory & Faith® lecture series provides expert Alzheimer's education, support, and local resources to churches and families.

NOVEMBER 8th

UNDERSTANDING ALZHEIMER'S & DEMENTIA

This lecture is designed to enhance understanding of Alzheimer's and will explain the various other types of dementia - including symptoms, diagnosis, disease progression, and treatment options - all in language we can all understand. Alzheimer's disease is the most feared disease for people over 65 but hope is on the horizon. Over 5 million are currently diagnosed with Alzheimer's in the U.S. this lecture is designed point people in the right direction for information, care and treatment.

DECEMBER 13th

IS IT ALZHEIMER'S OR NORMAL AGING?

Your memory changes as you grow older. Some memory loss is normal but memory loss that disrupts daily life is not a typical part of aging. It may be a symptom of dementia. Dementia is a slow decline in memory, thinking and reasoning skills. Join us to -find out when memory loss is more than normal aging.

JANUARY 10th

NUTRITION AND ALZHEIMER'S PREVENTION PART 1

Researchers across the world are racing towards a cure for Alzheimer's disease. But as prevalence rates climb, their focus has broadened from treatment to prevention strategies. What they've discovered is that it may be possible to prevent or delay the symptoms of Alzheimer's disease and other dementias through a combination of diet and nutrition. Join us and learn what the research says about how what you eat and what you do can reduce your risk for Alzheimer's.

FEBRUARY 14th

NUTRITION AND ALZHEIMER'S PREVENTION PART 2

Join us for part 2 of Nutrition and Alzheimer's Prevention and continue the journey of finding out how you can reduce your risk for Alzheimer's and other dementia's by understanding the role of food and nutrition.

MARCH 13th

AFTER THE DEMENTIA DIAGNOSIS: EXPLORING CAREGIVING STRATEGIES

When a person with dementia -finds that their ability to remember is declining, they often feel vulnerable and in need of reassurance and support. The people closest to them - including their family, friends and caregivers - need to do everything they can to help the person retain their sense of health, identity and feelings of self-worth. As the disease progresses, caring for someone with dementia becomes increasingly more difficult. Join us and discover facts about Alzheimer's and dementia. Discover how common dementia symptoms can be managed as well as coping techniques and other caregiver strategies to help you and your loved one find success.

APRIL 10th

OPTIMIZING BRAIN HEALTH THROUGH SPIRITUALITY

Many of us have discovered that we're more productive when our bodies and minds are aligned. The challenge is in learning to develop methods that help us achieve this alignment consistently. The focus of this presentation is to offer spiritual techniques through balance, relaxation, prayer and gratitude so that we can become present and centered in our daily lives. Attaining the spiritual skills and knowing when to use them provides for both a healthier personal perspective and a higher quality of life.

About our speaker:

Brian Browne, MS, CSA, is the president of Dementia Care Education and has over 20 years of experience in Alzheimer's and dementia research, education and care.



To RSVP :

Call (480) 842-5068

or Email

info@DementiaCareEducation.com

INVITE OR BRING A FRIEND

1:00 - 2:30 PM

Risen Savior

Lutheran Church

23914 S Alma School Road

Chandler, AZ 85248



Medical Super Center

EVERY 2ND FRIDAY FROM NOVEMBER THRU APRIL; 1:00 - 2:30 PM

ANSWER Continued...

The RSLCS Foundation, Inc.

RSLCS Foundation Free Life Planning Assistance

Do you have questions regarding your will, trust or gift planning? It's something most of us put off even though our circumstances are constantly changing. We provide a FREE service to assist with your life planning needs. Contact the church office for more information 480.895.6782.



Project Warm-Up America.

This non-profit provides blankets for the homeless in the winter. You can be a part of this great organization by knitting or crocheting a 7"x9" piece in worsted weight yarn of any color. Place your completed square in the basket in the Narthex, where there is yarn available for use. The pieces will be assembled into blankets that will be given to the homeless. If you have any questions, contact Nancy at 480.883.3905.



Hooks & Needles—A Hand to Heart Ministry

Tuesdays at 10:00 am in the Church Library.

If you enjoy knitting or crocheting, we would love to have you join our ministry! We create handmade prayer shawls, pocket prayer cloths and various items that are distributed throughout local communities and abroad. This is an excellent opportunity to spread the love of Christ, and the power of prayer to those in need! We are in need of yarn donations. Any size or amount is appreciated. Drop off all donations in the Narthex cabinet. Contact Marion at mrmyczek@gmail.com for details.

These shawls are given to shut-ins, someone grieving a loss, hospitalized, etc. If you know of someone, please contact Pastor Mark at the Church Office.



Baptisms

For information about you or a child being baptized please contact the Church Office.



Align Your Investments with Your Personal Values
Lutheran Church Extension Fund (LCEF) empowers ministries to share the Gospel and build God's Kingdom through Word and deed. An investment with LCEF puts your blessings from God to work for ministries, supporting what you value most. Making disciples is something we all can share through the LCEF ministry. There are a variety of LCEF investments to suit your needs. Find more information at lcef.org or call 800.843.5233.

ANSWER Continued...

Guatemala Friendship Ministry – La Cuchilla Carepoint



January 12, 19 and 26 you will be able to sign-up to become a HopeChest Ministry Partner with a child in La Cuchilla.

How can RSLC Members Participate in this Ministry?

- By becoming a **Friendship Partner** to a child in La Cuchilla
- By becoming a gift donor to facilitate development projects in La Cuchilla
- By participating in Friendship mission trips to La Cuchilla
- By keeping the Guatemala Friendship Ministry in your prayers

Why Would You Become a Child's Friendship Partner?

The way Children's HopeChest is structured, a Friendship Partnership enables you to enjoy the unique opportunity to have a one-on-one personal relationship with a child from La Cuchilla. Through letters, photographs and even potential mission visits you will have an opportunity to build a friendship that can last a lifetime and provide hope for a vulnerable child.

Remembering our sermon series "**Better Together**", you will not be alone. **Together**, with four local churches and Children's HopeChest, we will be **Better** able to provide a foundation that will ensure the sustainable well-being of vulnerable children.

Because...We are "blessed to be a blessing".

What are the Responsibilities of a Child's Friendship Partner?

- Keeping your Child Friendship Partner in your prayers
- Letter writing to your Child Friendship Partner at least three times per year. What would you write about?

Sharing photos, offering words of encouragement, learning what the child's interests are, learning about the child's family, etc. (**Note:** You do not need to know Spanish. All letters are interpreted by HopeChest from English to Spanish and Spanish to English. Your letters can be written on the HopeChest La Cuchilla Community Page. In addition, you can upload photos from the same community page.)

- Optional mission visit to see your Child Friendship Partner.
- Cost of \$45 per month. This is tax deductible.

A minimum one-year commitment to remain the child's Friendship Partner. However, a long term relationship would be extremely positive on the child's development.

For more information, visit the RSLC website at rslcs.org, tap the menu bar, go to ministries, go to missions, from here you can access the Children's HopeChest website at hopechest.org and the La Cuchilla community page.

Please contact Bob at rmmyczek@gmail.com if you need additional information.

ANSWER Continued...



Piece Maker Quilters

Wednesdays from 1:00 pm—4:00 pm in the Fellowship Hall.

The purpose of the Piece Makers Quilting Group is to provide the warmth and comfort of handmade quilts and knitted hats to those in need. These items are enjoyed by those in our communities and also throughout the world. Recently, 75 hats were donated to the OCC Ministry, 50 hats and 16 baby quilts were sent to Mexico and 25 quilts were given to Veterans.

We are always in need of the following items:

- More volunteers
- Unstained clean flat sheets
- Yarn of any type or color
- Cotton blend fabric (for the quilt top squares)
- Sewing supplies

Contact Sandi 480.202.5772 or Barb 602.565.7137 with any questions.

Men's Early Bird Bible Study

January 11 and 25 at 7:00 am in
The Perfect Place.

This group meets twice a month, on the 2nd and 4th Saturdays, for Bible study and fellowship. Contact Chuck at 480.766.3626 or cmdeuth1@gmail.com for more information.

Grief Share

Mondays from 10:00 am—11:30 am in the Church Library.

Grief Share is a grief recovery support group where you can find help and healing for the hurt of losing a loved one. Don't worry if you are unable to make all of the studies. Call the church office 480.895.6782 for more details.

Blood Pressure Screenings

January 12 Between Services in the Narthex.

If you are interested in serving on the Care Ministries team (*you do not have to be in the medical profession*), contact Nancy at goodingpn@wbhsi.net.

Visitations

If you or someone you know would like to notify the church of a surgery, hospitalization or other care emergency, please email visits@rslcs.org. Please include the facility and contact number.

ANSWER Continued...

Stephen Ministry—No Meeting January 1



This ministry is a one-on-one lay caring ministry that takes place in congregations that use the Stephen Series system. This ministry equips and empowers lay caregivers to provide high-quality, confidential, Christ-centered care to people who are hurting. Contact Pastor Mark at mark.hoffmann@rslcs.org for more information.

Care Ministry Meeting

January 14 at 4:00 pm in the
Church Library

If you are interested in serving on the Care Ministries team (*you do not have to be in the medical profession*), contact Nancy at goodingpn@wbhsi.net.

Project Warm-Up America.

This non-profit provides blankets to the homeless in the winter. You can be a part of this great organization by knitting or crocheting a 7"x9" piece in worsted weight yarn of any color. Place your square in the Salvation Army basket in the Narthex where the pieces will be assembled into a blanket for the homeless. If you have any questions, contact Nancy at 480.883.3905.

Chandler Salvation Army

January 5 in Between Services, place food in the closet in the Narthex.



The food drop-off for the Chandler Salvation Army is the first Sunday of each month. Please bring your non-perishables to the cabinet located in the hallway by the Fellowship Hall. The donation box for clothing and small household goods for the Salvation Army is located in the northwest corner of the church parking lot.

Sunday Ministry Partner Sign-up Process

Our Sunday morning Ministry Partner positions are scheduled through Planning Center. We are using a tool in Planning Center called "Sign-up-Sheets". Rather than the office scheduling, now you will be able to choose which Sundays/services you'd like to serve.

At the beginning of each month you will receive an email asking you to select which Sundays you would like to serve. These dates will be saved in your Planning Center account and you'll receive reminder emails as the date approaches.

We know that some of our married couples that use Planning Center share the same email address. If you do, here's what we need ONE of you to do: (One of you may keep your current password, but the other needs to create a new one). Enter the link to get to the sign-in page of Planning Center at <https://accounts.planningcenteronline.com>. Type in your email address and click the checkmark button. Remember, if you share an email address with another Planning Center user, you must keep track of which account you're accessing when you are signing up or making changes to your schedule.

For more details on how to get more involved, see the bottom of the website home page. There is a short video to assist you in how to sign-up. Contact the Church Office with any additional questions.

ANSWER Continued...

ALSO's 2020 Challenge

You can be a part of what God is doing in Lutheran Schools

If you pay Arizona state income tax, you can redirect your tax dollars and create scholarships. You can help a child receive a Christian education at no cost to you.

At ALSO, we have a dream to award full-tuition scholarships to children attending Lutheran schools, and we need your help!

Tax credit gifts of all sizes make a difference. From \$22, to \$226 and on up to \$2,269, every gift becomes a scholarship for a child to receive a Christian education.

At ALSO, we help you get the most out of the taxes that you already pay. You have until April 15, or before you file your state taxes to redirect your state tax dollars. Get details at ALSOsto.org.



Providing scholarships through tax credit donations. Learn more at ALSOsto.org

The Perfect Place (TPP)

The Perfect Place is a social and recreational daycare facility (non-medical), that provides a safe and fun place for Seniors. What you might not know is that our care extends to the whole family. Family members enjoy a time of respite when their loved ones are at The Perfect Place.

All of you are invited to visit us at The Perfect Place if you are interested in seeing what we do or if you are interested in volunteering, stop in at any time we are open.

Hours of Operation:

Monday, Tuesday, Wednesday and Friday, we have sessions 9:00 am - 12:00 pm and 1:00 pm - 4:00 pm. We also offer all day options.

Contact The Perfect Place office 480.895.2892 and our staff would be happy to speak with you.



Lutheran Social Services of the Southwest

Showing kindness, doing justice and serving those in need, we are located statewide and serve 10 counties across Arizona. Arizona non-profits do many things well that make this state a better place to live but we do this with the support of many partners.

You are the rock stars. Thanks for creating the kind of community God envisions for Arizona. To learn more about the work of LSS-SW, please visit their website and subscribe to their e-newsletter, www.lss-sw.org.

ANSWER Continued...

Worship Data Survey Results

The data below was derived from the Worship Service Surveys that were taken last month. The following information is the results from the current service attended and which preferred style of worship.

Those who noted that they attend the **7:30 am Worship Service** responded that their preferred time for worship was; 63-7:30 am, 84-8:00 am, 37-8:30 am, 24-9:00 am, 3-9:30 am, 0-10:00 am, 1-10:30 am, 0-11:00 am and 3-11:30 am.

When asked what style they prefer – 194-Traditional, 6-Contemporary and 12-No Preference

Those who noted that they attend the **8:50 am Worship Service** responded that their preferred time for worship was; 5-7:30 am, 7-8:00 am, 37-8:30 am, 81-9:00 am, 18-9:30 am, 2-10:00 am, 0-10:30 am, 0-11:00 am and 0-11:30 am.

When asked what style they prefer – 7-Traditional, 126-Contemporary and 17-No Preference

Those who noted that they attend the **10:10 am Worship Service** responded that their preferred time for worship was; 0-7:30 am, 0-8:00 am, 1-8:30 am, 27-9:00 am, 22-9:30 am, 163-10:00 am, 47-10:30 am, 3-11:00 am and 0-11:30 am.

When asked what style they prefer – 26-Traditional, 203-Contemporary and 36-No Preference

Those who noted that they attend the **11:30 am Worship Service** responded that their preferred time for worship was; 1-7:30 am, 0-8:00 am, 0-8:30 am, 7-9:00 am, 3-9:30 am, 18-10:00 am, 21-10:30 am, 27-11:00 am and 30-11:30 am.

Finding Meaning and Hope—A Video Discussion Series for Family Caregivers

Tuesdays, January 14-February 11 from 2:00 pm—3:30 pm in The Perfect Place.

Join a group of fellow care givers as we discuss the complexities of ongoing loss associated with caring for someone with dementia and what to do about it. You will learn skills to help you stay strong, healthy, resilient and positive so you can navigate the journey with healing and hope. This series is based off the book *Loving Someone Who has Dementia: How to Find Hope While Coping with Stress and Grief*, by Pauline Boss, Ph.D., the nation's leading expert on caregiver grief. This program is free. If you have additional questions, call Pamela at 651.395.2109 or pamela@essentialservicesinc.com.

DEVELOP

New Sunday Bible Studies - Starts January 12

Are you interested in gaining a deeper knowledge of the Bible? If so, then one of these two new classes will be perfect for you. Each of these 13-week studies will cover one or more books of the New Testament, with a focus on the book's background, message, and application to our lives. Participants can purchase a best-selling study guide/workbook for the class and home study, which includes the complete text of the scriptures to be studied, the Life Application Bible commentary and study notes for the scripture, as well as questions leading us deeper into our understanding of Jesus. As participants in past offerings of these classes will tell you, we learn a lot, get to know each other, and have a blast every Sunday morning. The classes will meet each Sunday morning in the Conference Room beginning January 12. Pick the time below that best fits your Sunday worship schedule. So that we can get an accurate count, please let us know which class you plan to attend by contacting Barry Ritchie (who will be teaching the classes) either by phone at 480.839.1382 (please leave a message if there's no answer) or send him an email at britchie11@juno.com. See you there!

8:45 am The Letter of James

Luther may not have liked the Letter of James early in his life but Luther came around to appreciate and treasure its practical approach to developing a living faith. As James famously says, "Faith without works is dead." You'll be challenged by this letter to build up a "muscular faith" in Jesus. As one of our members put it, "James is going to get in your business and straighten you out!"

10:10 am Paul's Letters to the Philippians and Colossians

We'll tackle two incredible letters from Paul. The Letter to the Philippians is sometimes called "The Letter of Joy", disclosing how he (and we!) can handle adversity as joyful Christians, no matter what our circumstances. The Letter to Colossians was written to a church under pressure from a society that knew nothing of Jesus and thrived on power and possessions – not terribly different from Western society today. His timeless advice and reminders will be useful for us in the contentious environment in which we find ourselves living.

Maricopa Bible Study - Lifeguide Bible Study "Decision" by Donald Baker.

Begins January 6 at 6:30 pm, RSVP for more details.

Donald Baker begins this guide by saying " God has given me free will, and while I appreciate His confidence in my ability to choose, there are times when I wish that He would make the decision for me.

Unfortunately, the Bible cannot give us the answer to every choice we face, either. But the Bible does teach us how to make decisions. These studies will help you to learn those principles and apply them to your life. Call Linda at 480.452.8980 for further information.

Adult Forum with Pastor Teuscher—No Meeting January 12

Sundays at 8:40 am in the Fellowship Hall.

Mid-Week Bible Study with Pastor Mark

January 8 at 5:30 pm in the Church Library.

DEVELOP Continued...



This Thursday morning, weekly program is just for women and was developed by our Women's Ministries Director, Annie Wolf. Each week, women will have the opportunity to gather for worship and fellowship as well as hear from a guest speaker. The program's mission is to walk alongside women as they seek what decades of research list as the top spiritual needs of today:

1. To believe that life is meaningful and has purpose.
2. To have a sense of community and deeper relationships.
3. To be listened to.
4. To feel they are growing in their faith.
5. To get practical help in developing a mature faith.

This group meets weekly on Thursdays from 9:00 am—11:00 am in the Sanctuary.

No meeting January 2.

January 9 in The Perfect Place

Guest speaker Dawn Hopkins will be joining us for a Bible topical study and fellowship.

January 16 in The Perfect Place

Guest speaker Dawn Hopkins will be joining us for a Bible topical study and fellowship.

January 23 & 30 details TBD.

Contact Annie at womensministries@rslcs.org for more information.

Every week, the guest speaker will share a topic that is meaningful to them, has provided them with purpose and helped them grow in their faith. To name a few, there will be messages of: healing and hope, purpose and passion, sin and a good savior, surviving and surrender, wellness and worship and



Christmas Update

The children said thank you to Women's Ministry for providing 15 children with Christmas gifts and 33 stockings!

New Women's Bible Study—Golden Fruit

Starting on January 14 on the 2nd and 4th Tuesday's of each month from 6:30 pm - 8:00 pm in The Perfect Place.

Golden Fruit; 9 Lessons on the Fruit of the Spirit. A woman of the Bible will illustrate each fruit. Join us for this new Bible Study the Contact Ruth Ann for more details at steveabendicott@gmail.com.

DEVELOP Continued...

Sunday's for Children and Teens

The Nursery is available during each of our Sunday services and all kids ages 0-3 years old are welcome. Turn left when coming through the main front doors and follow the signs.

Families are learning about Jesus and growing in their love for Him!

Children, youth and parents are all invited to the education hour on Sunday mornings beginning at 10:00 am. We encourage families to worship together at either the 8:50 am or 11:30 am service.



JAM! (Age 3-Grade 5)

Sundays at 10:10 am Check-in downstairs. Join in the fun today as we learn about Jesus, know Him personally and grow in our love for Him!



Ignite Confirmation (Grades 6-8)

Sundays at 10:00 am in the Youth Room.



Impact (Grades 9-12)

Sundays at 7:00 pm in the Youth Room.

Mission Trip to ISA—Deadline to Register is February 1 June 28-July 3 in Idaho

Contact Shannon for more details or to register.

Follow the Youth on Instagram: **RSLCS_Youth**

We now have a private Facebook page for the Youth and Parents to get updates. Email Shannon at the address below to get added to the group.



Contact Shannon at shannon.porter@rslcs.org for details about youth ministries.

Pictures below are from Impact's Foam Glow Run in December.



Risen Savior Monthly Financial Review

The following is a summary of financial activity for Risen Savior Lutheran Church. If you would like more detailed reports, please contact our Business Manager, Susan Mello at susan.mello@rslcs.org.

Did you know?

IT'S NOT TOO LATE!

You can help a child receive a Christian education at no cost to you.



If you pay Arizona state income taxes, you can make a donation to ALSO and claim the amount you give as a dollar-for-dollar tax credit that lowers your bill.

Financial Summary for November 2019:

Giving Results

Giving was **over** budget by \$11,776 for the month of November and is **under** budget FYTD20 by (\$12,823).

December month to date looks like Giving may be slightly over budget.

We estimate Giving to be slightly below budget by the end of December 2019.

Spending

Spending was **under** budget by (\$11,580) in November.

Preschool and Kindergarten (PS&K)

PS&K Net Income was **over** budget by \$1,067 in November.

Looking forward to the end of 2019, we anticipate that the Preschool and Kindergarten will be on budget.

Net Operating Cash

As of November 30, 2019, Operating Cash is a **negative** of (\$110,445) which is a net positive change of \$2,363.

Financials Continued...

High Level Statement of Financial Income and Expense							
	Nov-19	Nov-19	\$ Over	FYTD20	FYTD20	\$ Over	Annual
	Actual	Budget	Budget	Actual	Budget	Budget	Budget
Giving	122,911	111,135	11,776	483,277	496,100	(12,823)	1,440,000
All other income	3,551	4,230	(679)	17,429	21,150	(3,721)	50,800
Total Church Income	126,462	115,365	11,097	500,706	517,250	(16,544)	1,490,800
Preschool & Kindergarten	93,548	95,755	(2,207)	459,669	485,705	(26,036)	1,155,450
Total Operational Income	220,010	211,120	8,890	960,375	1,002,955	(42,580)	2,646,250
Operational Expenses	207,185	218,765	(11,580)	1,015,727	1,062,340	(46,613)	2,522,750
Net Income/(Loss)	12,825	(7,645)	20,470	(55,352)	(59,385)	4,033	123,500
High Level Statement of Operational Cash							
November 2019							
Cash/Receivable Balance 11.30.19		587,493	*				
Ministry Expansion - WIP		0	*				
Restricted Assets		120,842	*				
Unrestricted Assets							
Designated Savings		480,966					
Designated Programs		96,130					
Total Unrestricted Assets		577,096					
Net Operational Cash 11.30.19		(110,445)					
Cash/Receivable Balance 10.31.19		1,426,044					
Ministry Expansion - WIP		960,121					
Restricted Assets		1,935,274					
Unrestricted Assets							
Designated Savings		458,207					
Designated Programs		105,492					
Total Unrestricted Assets		563,699					
Net Operational Cash 10.31.19		(112,808)					
Net Operating Cash Change		2,363					
* All funds for Ministry Expansion have been transferred to LCEf to offset outstanding loan balances and will be applied to future Expansion expenses.							



Janice	Kabele	1/1	Duane	Anderson	1/14
Mikayla	Dulaney	1/1	Louise	Longlet	1/14
Elaine	Schaffer	1/3	Claire	Ritchie	1/14
Austin	Culp	1/3	Leona	Wolf	1/14
Dorothy	Mitchell	1/3	Kinzi	Zirpel	1/14
Ronald	Mitchell	1/3	Ronald	Schaab	1/15
John	Della Chiesa	1/3	Jayne	Westlind	1/15
Allan	Haugen	1/3	Tracy	Hippensteel	1/15
Kenna	Mitchell	1/3	Noah	Bernal	1/15
Joyce	Zwar	1/4	Ann	Korpalski	1/16
Don	Archibald	1/5	Douglas	Newland	1/16
Sheila	Hurst	1/5	Julia	Golichowski	1/16
Madison	Mitchell	1/5	Victoria	Lopez	1/16
Zachary	Melendez	1/5	Karlee	Stevens	1/16
Michael	Shockley	1/6	Dick	Meyer	1/17
Marcia	Weiss	1/6	Kenna	Cundiff	1/17
Kristin	Lill	1/6	Edna	Hayn	1/18
Angelina	Virgo	1/6	Carolyn	Kroeger	1/18
Connor	McLean	1/6	Margaret	Kelly	1/18
Walter	Moore	1/7	Linda	Pauley	1/18
Robert	Connors	1/7	Beth	Zych	1/18
Donna	Kerr	1/7	Bodil	Ehlbeck	1/19
Teresa	Golichowski	1/7	Aaron	Wolf	1/19
Michael	Thayer	1/9	Henry	King	1/20
Kathleen	Lund	1/9	Bonnie	Kane	1/20
Mikaela	Correa	1/9	Kelleigh	Burns	1/20
William	Ellis	1/10	Neil	Curtis	1/21
Megan	Padilla	1/10	David	Keipert	1/21
Gwendolyn	Jacox	1/11	Kathleen	Newman	1/21
Nancy	Watkins	1/11	Christopher	Lopez	1/21
Rebecca	Derr	1/11	Charles	Poulson	1/22
Annie	Appleton	1/11	Don	Henke	1/22
Jo	Keuer	1/12	Roger	Osten	1/22
Charlotte	Herrington	1/12	Bron	Steinmetz	1/22
Bailey	Swallows	1/12	Jeffrey	Wirth	1/22
Jimmie	Dean	1/13	Makena	Erickson	1/22
Linda	Martin	1/13	Sue	Best	1/23
Josie	Barden	1/13	Kristy	Ausdemore	1/23
Colton	Gloyd	1/13	Sadie	Stroup	1/23
Jay	Kunka	1/13	Caitlin	Bump	1/23



Gary	Lawrence	1/24
Kevin	Lantz	1/24
Eva	Ellis	1/25
Andrew	Dunning	1/25
Pete	Karubos	1/26
Carol	Rittenback	1/26
Warren	Cole	1/26
Patrick	Mitchell	1/26
Gary	Voelker	1/27
Cozetta	Peters	1/27
Mojo	Krup	1/27
Julie	Constance	1/27
Delores	Logan	1/28
Arnie	Hastings	1/28
Robert	Abersold	1/28
Dallas	Crosley	1/28
Robert	Tanner	1/29
Linda	Metzger	1/29
Sophia	Cowan	1/29
Betty Jo	Burke	1/30
Louise	Keyack	1/30
Christine	Kibler	1/30
James	Arthur	1/30
Amelia	Wolf	1/30
Tom	Woodard	1/31
Craig	Dunning	1/31
Matthew	Lichtsinn	1/31



Larry & Beverly	Mueller	1/22/1949
Richard & Audrey	Jung	1/14/1956
Floyd & Louise	Longlet	1/7/1961
Kent & Diane	Dugstad	1/12/1961
William & Barbara	Niemeyer	1/31/1966
Jerry & Gloria	Anderson	1/28/1967
Dale & Leslie	Pettis	1/20/1968
Andrew & Donna	Kerr	1/27/1973
Ronald & Cheryl	Schaab	1/23/1976
Larry & BJ	Schuller	1/1/1977
Mark & Linda	Krueger	1/15/1977
Leonard & Lois	Vostrejs	1/1/1983
Jerry & Joan	Letnes	1/26/1991
Sheila & Mike	Hurst	1/25/1995
Craig & Elizabeth	Dunning	1/6/1996
John & Sharon	Tarvin	1/3/1998
Augustine & Tracie	Padilla	1/16/1998
Jill & Ramon	Lopez	1/3/2003
Robert & Kristen	McLean	1/16/2005
Tammy & Derek	DuMelle	1/26/2013
Laura & Cody	Ostrand	1/17/2016



**RISEN
SAVIOR**
LUTHERAN CHURCH